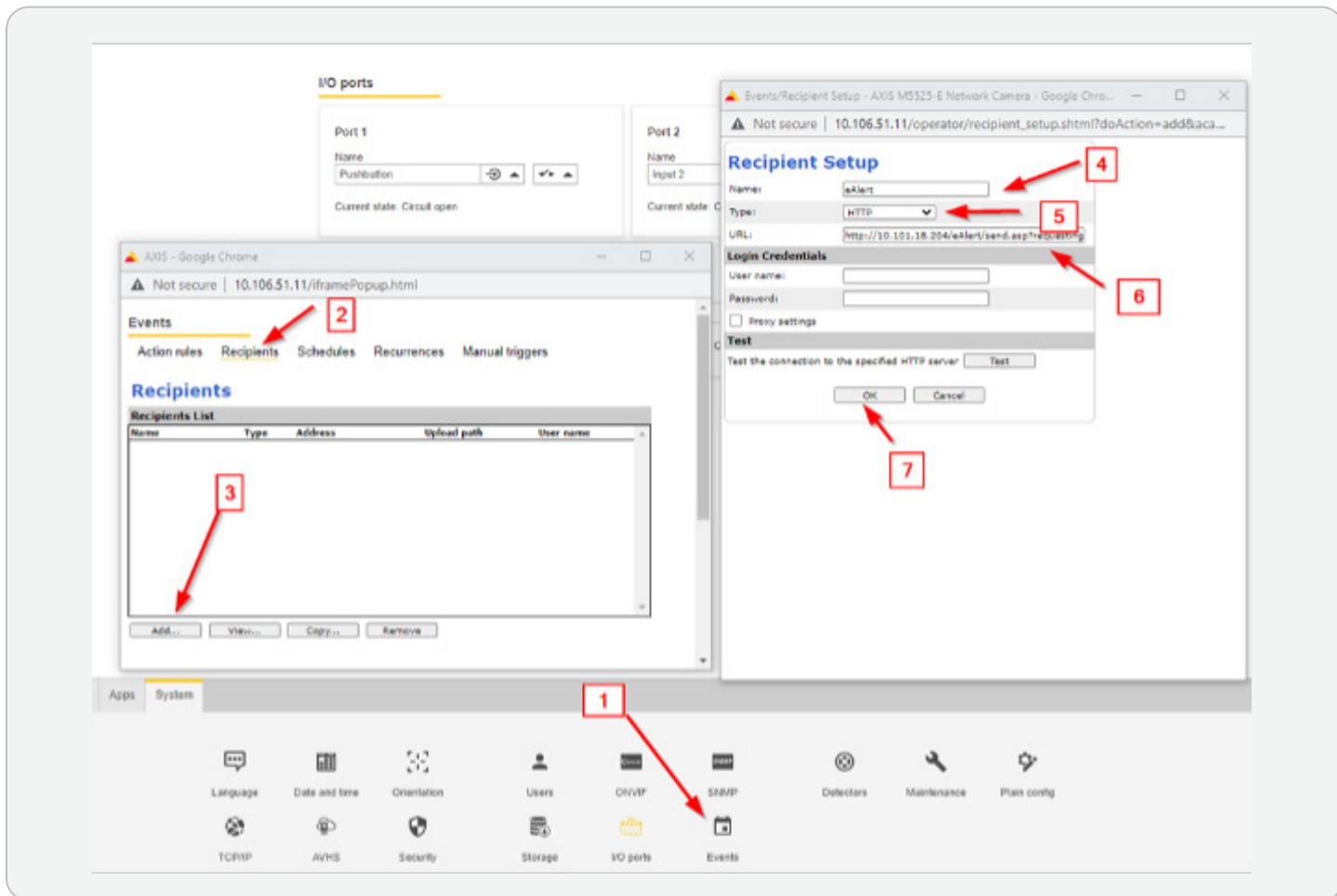


# CareCam

## eAlert Setup Instructions





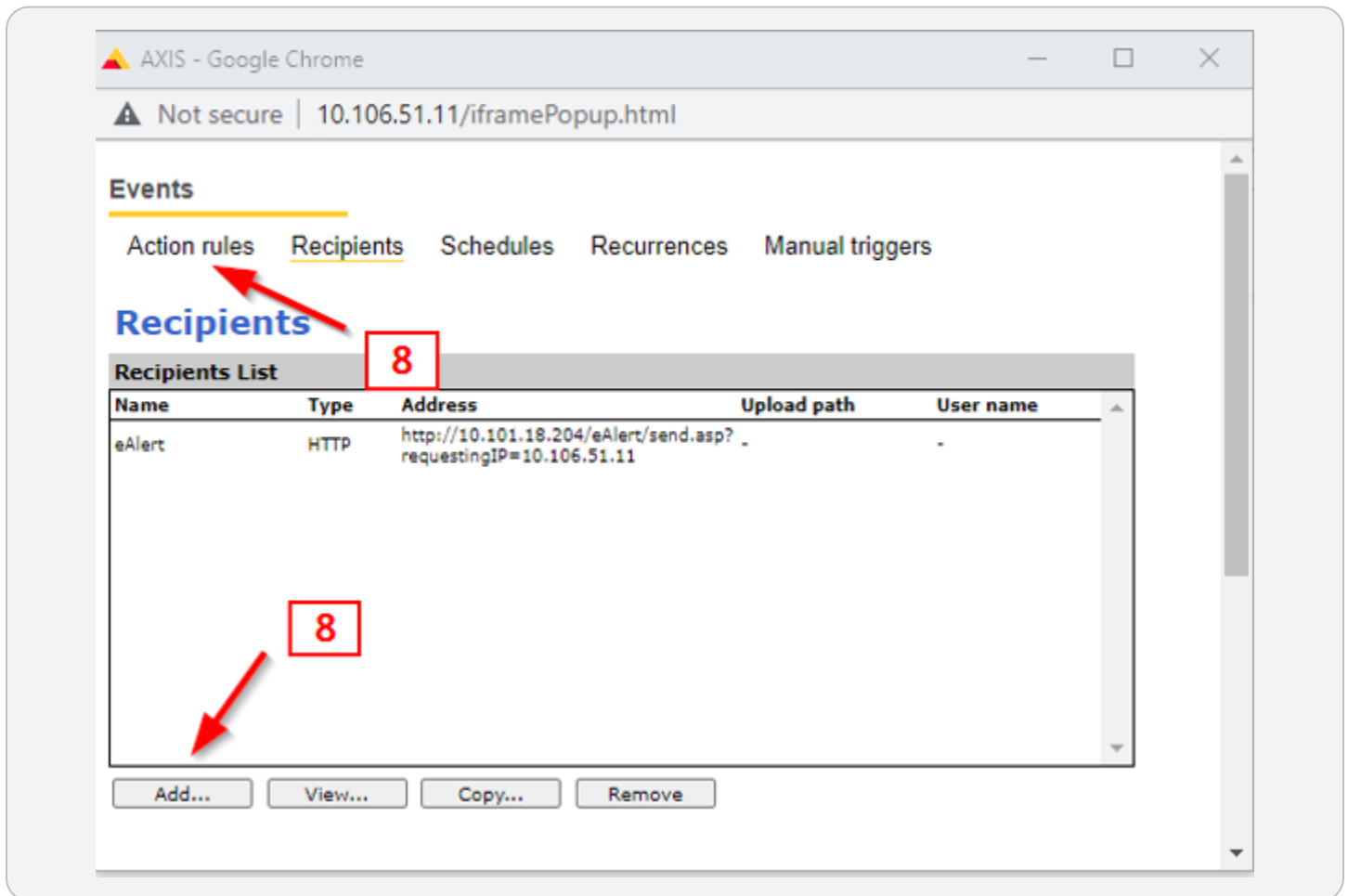
- 1 Log into the camera: from the Setting > System tab click **Events**
- 2 Click **Recipients**
- 3 Click the **add** button
- 4 Enter **eAlert** as the recipient name
- 5 Select **HTTP** from the type dropdown

- 6 Enter the http path to the server as well as the DNS of the camera  
**http://10.101.18.204/eAlert/send.asp?requestingIP=epmaxis00163.sentara.com**

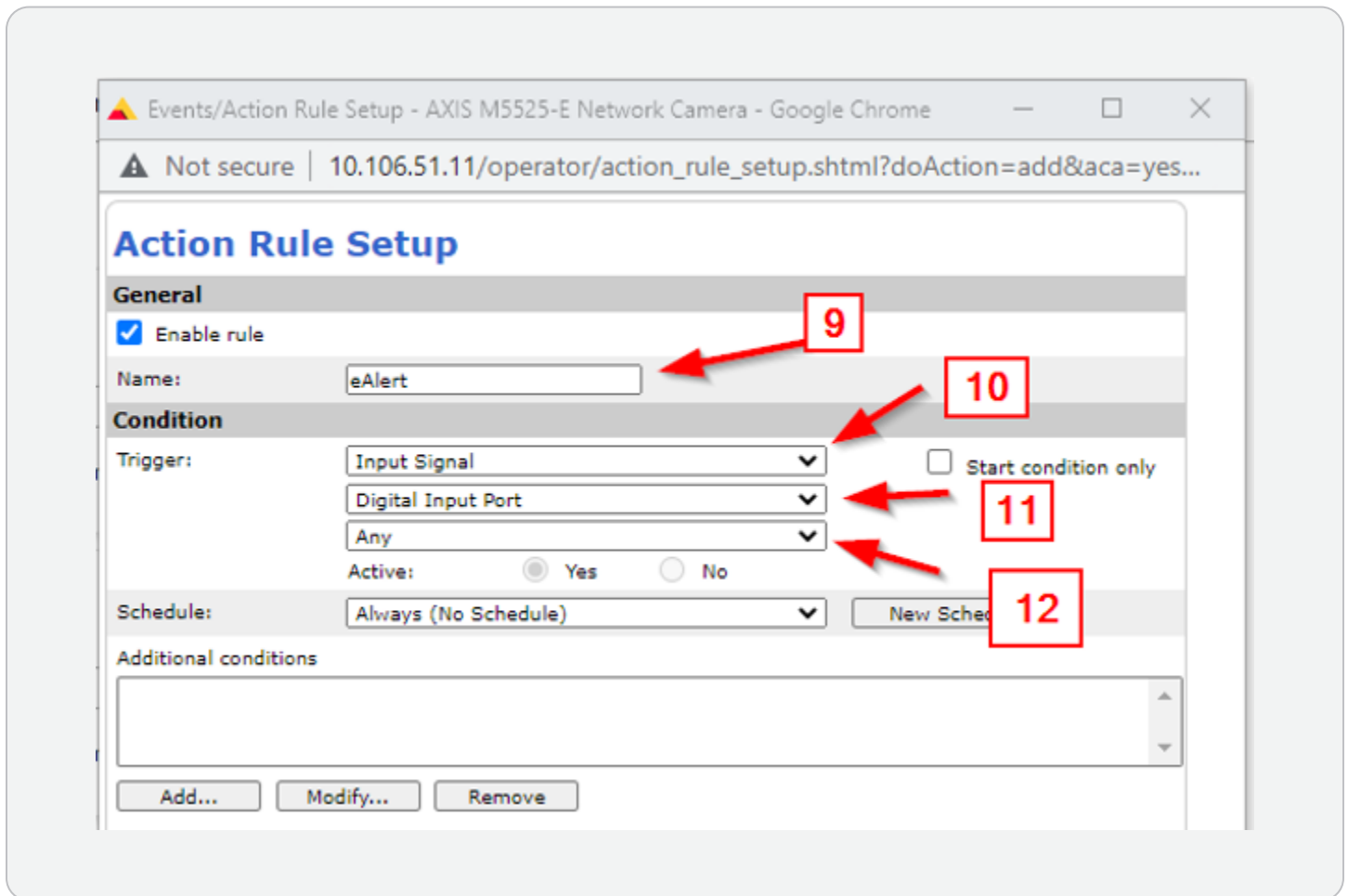
In this example the **10.101.18.204** is the IP of the server and will never change

**Epmaxis00163.sentara.com** is the DNS of the camera and will be different for each camera

- 7 Click **OK**



- 8 Once you click okay the recipients screen will look like this.  
From here click the **Action rules** tab then the **Add** button



- 9 Enter **eAlert** for the name
- 10 Select **Input Signal** from the trigger dropdown
- 11 Select **Digital Input Port**
- 12 Select **Any**

Additional conditions

Wait at least 00:00:00 before re-running the rule (max 23:59:59)

**Actions**

Type: Send Notification

eAlert

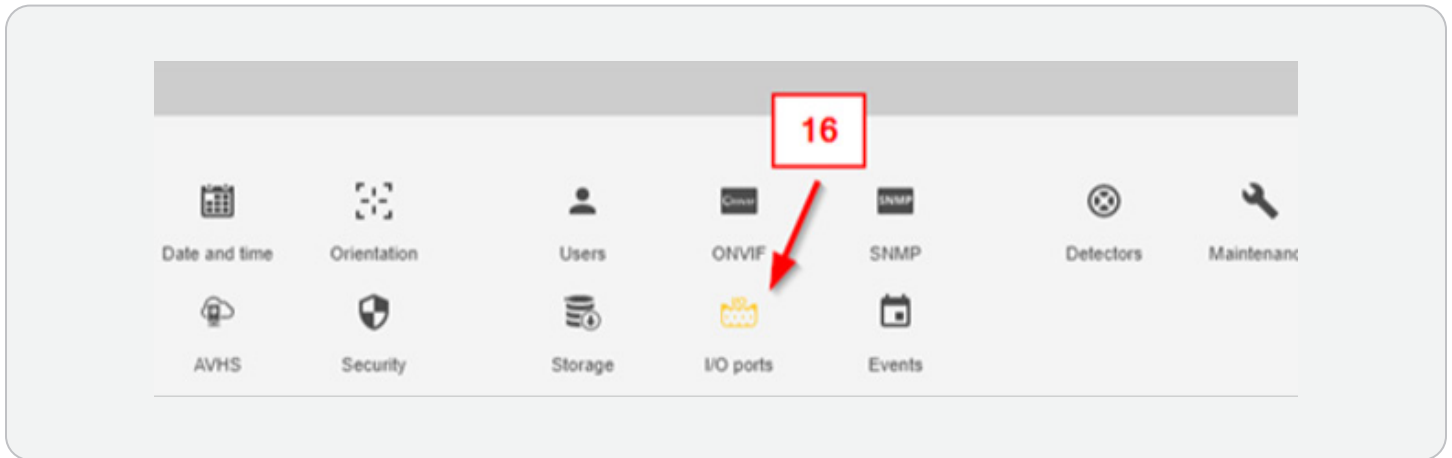
\*Message parameter:

\*Custom parameter:

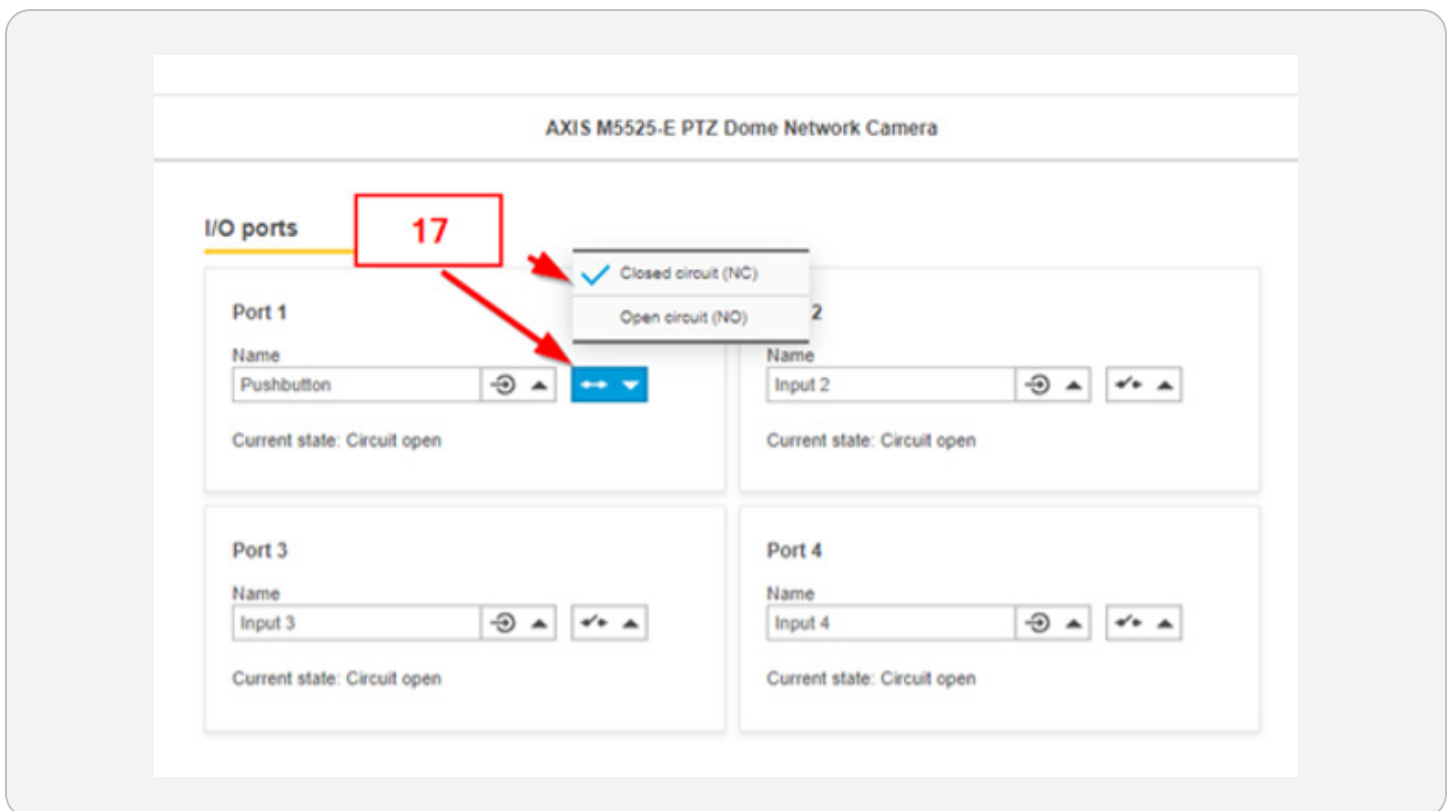
Name	Value
------	-------

OK Cancel

- 13 Select **Send Notification** from the Type dropdown under actions
- 14 Select the **eAlert** recipient we created in steps 1-7
- 15 Click **OK**



16 From the camera settings menu click the **I/O ports** option



17 Beside port 1 select the dropdown and choose **Closed Circuit**