

# CareCam Cart

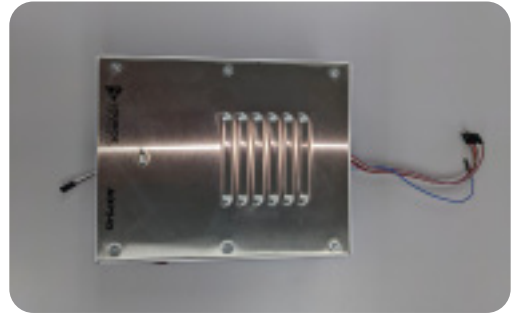
## On-Site Installation Instructions



Parts Overview



Cart Component



Intercom Component



Access Point



Camera Component



Battery

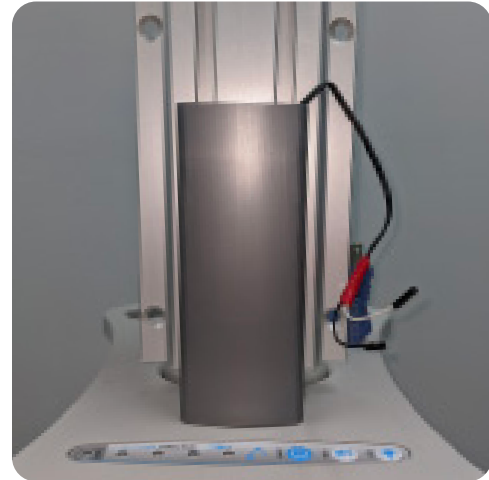
Assembly

1

### Intercom Component

Raise the 2-wire power lead and snap in the short cable shroud to the channel

Slide a stop onto the channel and secure it at desired level



Slide the intercom component onto the channel



Connect the power leads, matching the wire colors



Tuck excess power cable behind the shroud and bring the intercom to rest on its stop

Raise the audio/data cable and snap the long cable shroud to the channel



2

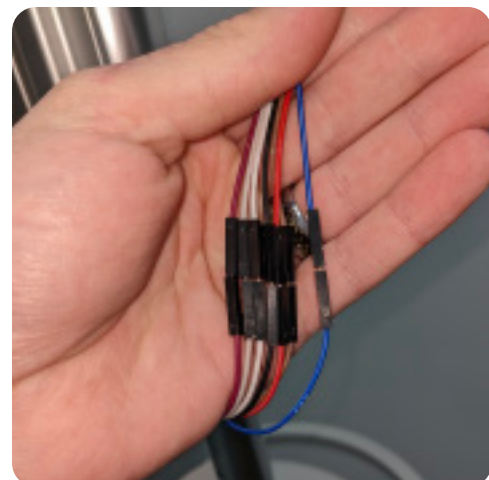
## Camera Component

Slide a stop onto the channel and secure it at desired level

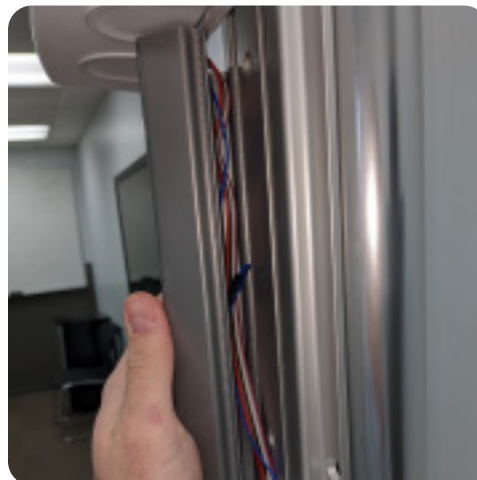
Slide the camera component onto the channel



Attach the audio/data wires, matching the wire color



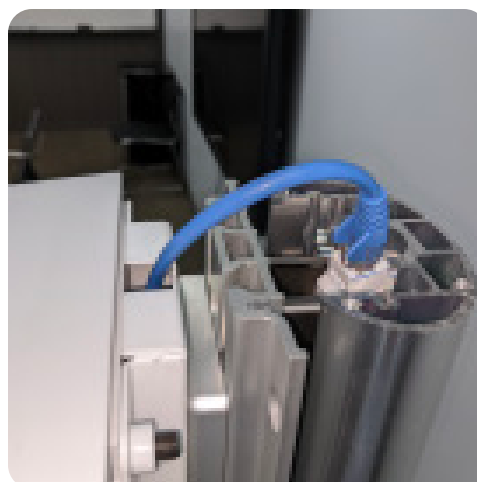
Tuck excess wire behind the shroud



Snap the shroud in place



Connect the rj45 cable from the top of the camera component to the coupler on the top of the pole



---

## Access Point

In general, this would be pre-installed, but if servicing is required, follow the below

---

1. Remove the two phillips head screws on the rear lower shroud of the cart base
2. Lift and move the battery out of the way
3. Retrieve the access point from its mount
4. Replace the access point, verify the following connections:
  - Ethernet cable that climbs the pole to E0
  - Ethernet cable to port on the base shroud to E3
  - Power connection on side
  - Power adapter connected to power strip on inside of base
5. Place battery in cart
6. Replace the lower shroud and its two phillips head screws

---

## Battery

In general, this would be pre-installed, but if servicing is required, follow the below

---

1. Remove the two phillips head screws on the rear lower shroud of the cart base
2. Lift and move the battery to give yourself room to work
3. Remove the positive and negative leads using an open ended wrench
4. Move old battery out of the way
5. Move in new battery
6. Connect the positive and negative leads using an open ended wrench
7. Place battery in cart
8. Replace the lower shroud and its two phillips head screws