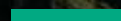




Hewlett Packard  
Enterprise

# HPE GREENLAKE: THE CLOUD THAT COMES TO YOU



# NOTE TO PRESENTERS

---

- These PPT slides are for HPE and Partner seller use only, as they have:
- The disclosure label Confidential | Authorized HPE Partner Use Only
- Speaker notes and intent statements on every slide
  
- Customers should only see PPT files of presentations that do not have disclosure labels or speaker notes.
- We have created the PPT version of this presentation and published it to Seismic as “without speaker notes” ready for you to share and send.
- Or, you may customize this presentation, then remove all disclosure labels, save it as a PDF, and share it with customers.
- It is important to share a PDF version of the presentation to ensure all fonts properly display.
  
- Note that each slide has an intent statement and speaker notes to help you deliver the best presentation.
  
- Add your name to the title slide.
  
- Please delete this slide before presenting.





**THE NEXT WAVE OF  
DIGITAL TRANSFORMATION  
WILL BE FUELED BY APPS AND DATA  
EVERYWHERE**

# DIGITAL TRANSFORMATION HAS ONLY REACHED A FRACTION OF APPS & DATA

Apps that can easily move to the cloud, **already have**

**Modern cloud experience**

SPEED AND AGILITY

**On premises reality**

DATA GRAVITY, SECURITY,  
PERFORMANCE, COMPLIANCE

**70%**

of apps are still outside  
the public cloud<sup>1</sup>

1 IDC Cloud Pulse Q1 2020

# NOW, DIGITAL TRANSFORMATION ENABLES SPEED EVERYWHERE

Achieve the cloud experience  
**for all apps and data—**  
everywhere

# HPE GREENLAKE

## THE CLOUD THAT COMES TO YOU



<sup>1</sup> Reserve may apply

# HPE GREENLAKE ACCELERATES DIGITAL TRANSFORMATION

**HPE GreenLake cloud services,** delivered to your edges, colocations and data centers enable you to:



**Transform your apps**  
without costly, time-consuming refactoring

**Transform data for insights**  
by creating your data services and ML/AI capabilities, while meeting data gravity, sovereignty and compliance needs

**Transform service delivery**  
across every part of your business

# HPE GREENLAKE CLOUD SERVICES

## HPE GreenLake Central

CONTAINERS

VIRTUAL MACHINES

MACHINE LEARNING

SAP HANA

MANAGED CLOUD SERVICES

PRIVATE CLOUD

DATA PROTECTION

BIG DATA

HIGH PERFORMANCE COMPUTE

DATABASE PLATFORM

COMPUTE

STORAGE

NETWORKING

VDI

GOVERNANCE & MANAGEMENT



# HPE GREENLAKE: NEXT GENERATION CLOUD SERVICES

HPE GreenLake brings the cloud to your apps and data at the edge, colocation, and data centers  
Self-serve, pay-per-use<sup>1</sup>, scale up and down and managed for you

## ACCELERATED CLOUD SERVICES

Containers, VMs,  
storage, compute

Machine Learning Ops

Data protection  
Cloud and on-prem

Networking

## OPTIMIZED AND STANDARDIZED CONFIGURATIONS

Best cost,  
Best performance,  
Balance  
(Small / Medium /  
Large)



Pre-configured workload-optimized  
HW/SW in as few as 14 days to your door

## SELF-SERVICE CLOUD EXPERIENCE



Point-and-click platform  
to learn, price, operate

<sup>1</sup> Reserve may apply

# GET THE CLOUD EXPERIENCE FOR YOUR MOST COMMON WORKLOADS

**Faster time to value** with pre-configured, ready-to-ship offerings in as few as **14 days**

**Capacity you need** when you need it—in minutes, not months

**Pay for what you use**<sup>1</sup> for simplicity and financial clarity

**Free up IT resources** to support strategic initiatives

## 17 configurations

for cost-optimized, balanced and performance workload requirements

### CONTAINERS

- Small
- Medium
- Large

- HPE Ezmeral Container Platform

### VMS

- Small
- Medium
- Large

- General purpose
- Hyperconverged
- Enterprise-ready
- Private cloud

### STORAGE

- Small
- Medium
- Large

- Mission critical
- Business critical
- General purpose

### COMPUTE

- Small
- Medium
- Large

- Composable
- General compute
- Storage optimized

<sup>1</sup> Reserve may apply

# ONE PLATFORM FOR NON-CLOUD NATIVE AND CLOUD-NATIVE APPS

## Non-cloud native applications



**Modernize** your apps without costly refactoring—and gain efficiency, increase agility and provide application portability



## Cloud-native applications



**Streamline** your development process and accelerate building cloud-native apps and deploying apps with DevOps and CI/CD



## HPE Ezmeral Container Platform

Self-service

Pay-per-use<sup>1</sup>

Scale up  
and down

Managed  
for you

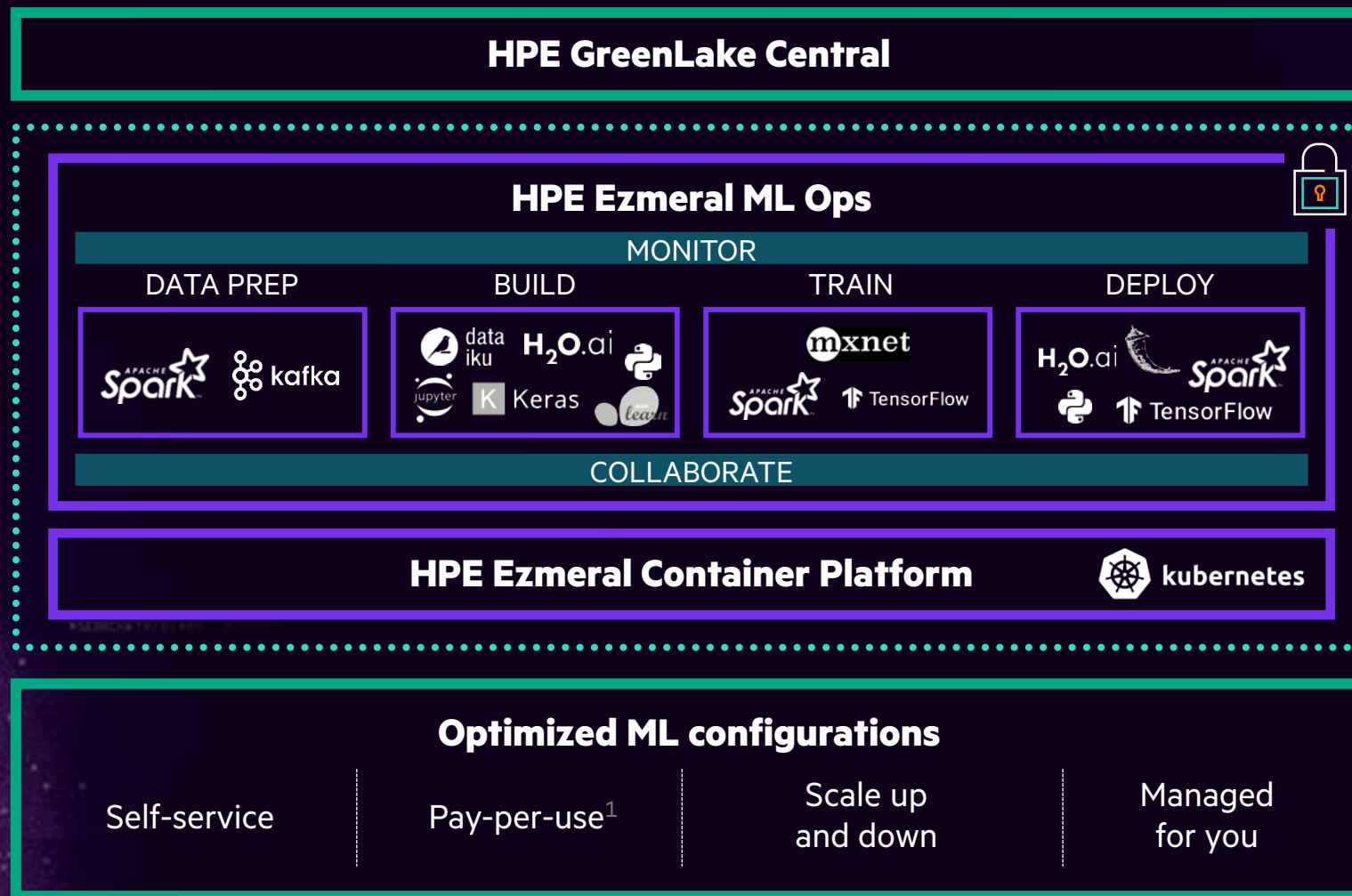
- DevOps
- Microservices
- Containers
- Security enablement
- Multi-tenancy
- Persistent storage for stateful apps

<sup>1</sup> Reserve may apply

# TRANSFORM DATA FOR INSIGHTS AT EVERY STAGE OF THE ML LIFECYCLE

Cloud services for ML Ops through HPE GreenLake:

- **Unlock the value** of your data with ML on premises
- Get data scientists **up and running quickly**
- **Seamlessly move** models from pilot to production at enterprise scale



1 Reserve may apply

# PROTECT YOUR DATA EVERYWHERE, EDGE-TO-CLOUD

With cloud services for data protection through HPE GreenLake:

- **Make data protection effortless** as you meet every SLA at the right cost
- **Protect your data as-a-service** with elastic scale and pay-per-use
- **Unlock the true value of your data** and transform it to a value-added service

## On premises

Rapidly recover data on premises with robust, capacity-efficient, enterprise-wide data protection

## Cloud

Modernize backup and recovery to/from cloud, and re-activate data for added value



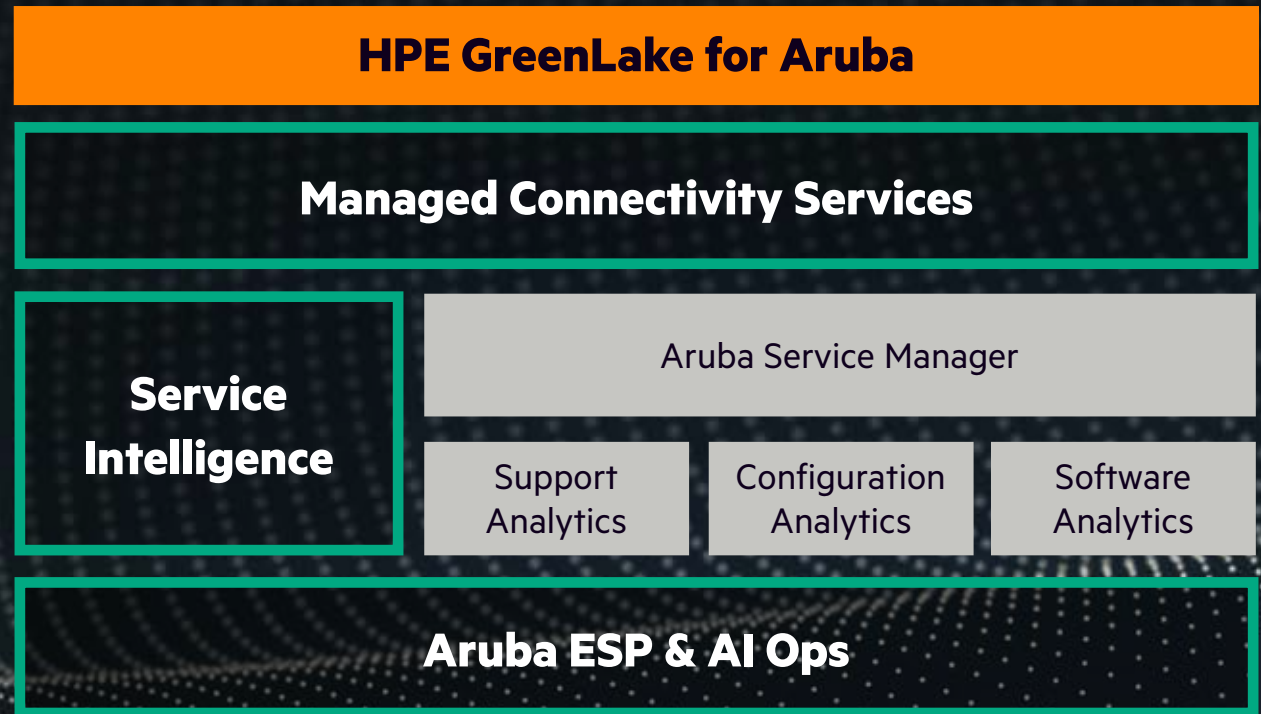
# SPEED INSIGHTS AT THE INTELLIGENT EDGE

**Keep your Aruba network performing optimally** with proactive service management

**Gain insights and efficiencies** from Service Intelligence data analytics, workflow automation, and KPI alerting

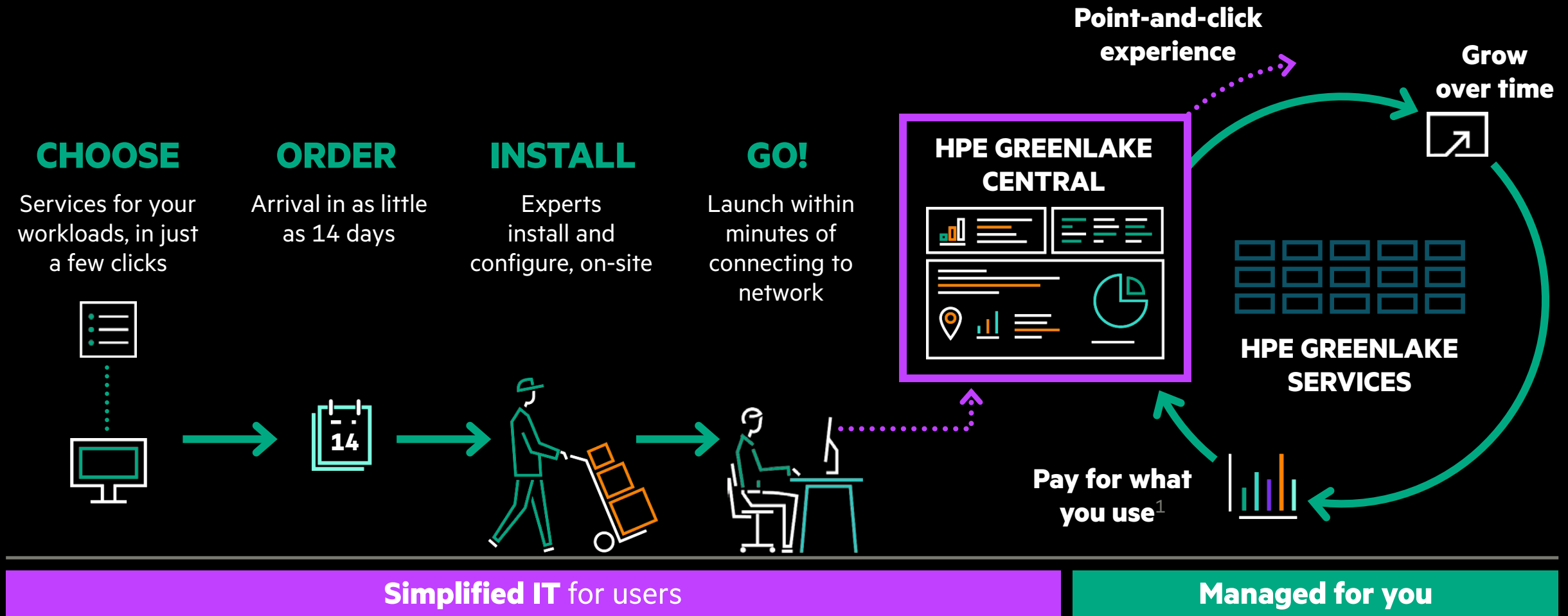
**Choose your flexible service levels** for onboarding, operating and updating your Aruba network

**70%**  
of IT's time is spent trying to diagnose and fix issues<sup>1</sup>



<sup>1</sup> Gartner Identifies 5 Network Cost Optimization Opportunities, Press Release, June 2019

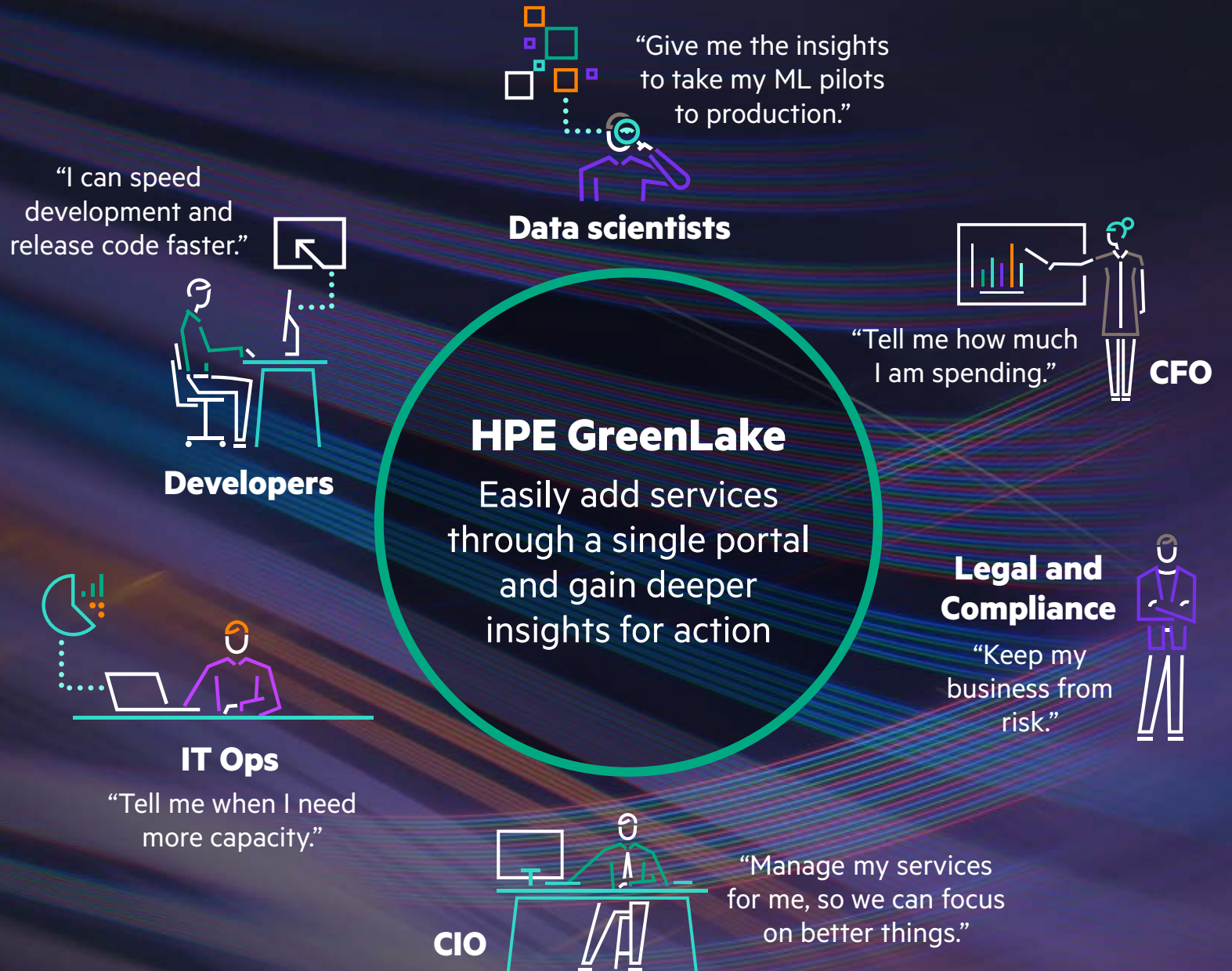
# HPE GREENLAKE BRINGS THE CLOUD TO YOU, FASTER



<sup>1</sup> Reserve may apply

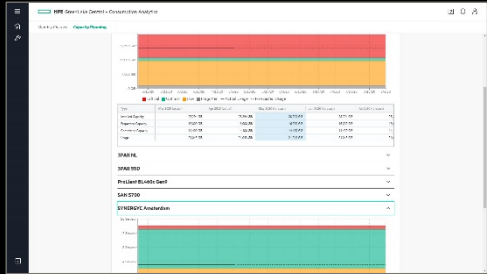
# TRANSFORM SERVICE DELIVERY

Accelerate how you deliver services across the business





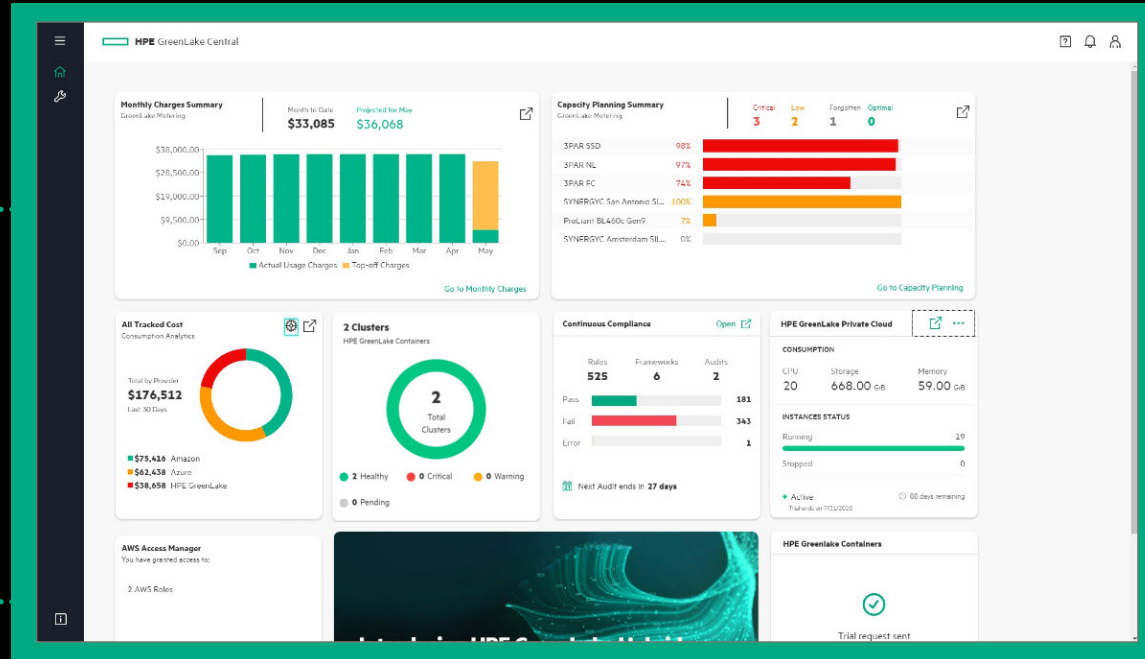
# REDEFINE EXPERIENCES WITH HPE GREENLAKE CENTRAL



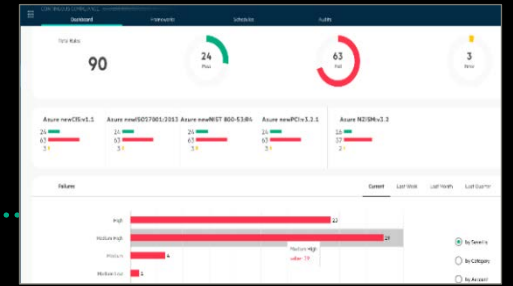
Capacity ready ahead of demand with built-in buffer



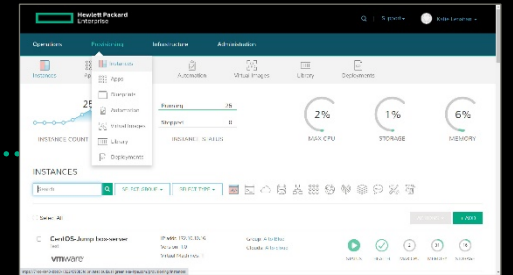
Cost controls to optimize spend across clouds



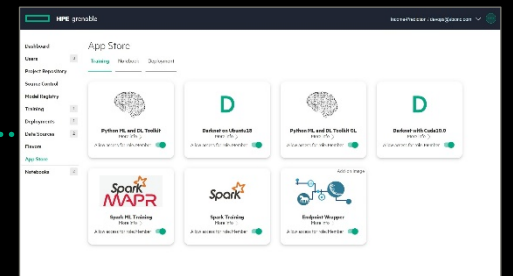
**HPE GreenLake Central**  
Intuitive, self-serve, point-and-click portal and management console



Continuous compliance for over 1,500 controls



Simple and fast for developers to spin up resources



Faster insights for data science teams, with choice of tools



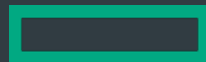
**PORSCHE**  
INFORMATIK



**NOKIA**



**Z E N U I T Y**



# EXPERTISE TO HELP YOU ACCELERATE YOUR DIGITAL TRANSFORMATION

## Design

Expertise to help you define and architect your right mix of clouds, for each of your workloads



## Modernize

Extensive cloud experience and IP to accelerate your cloud migration at every scale



## Operate

Automated services that monitor, operate, and optimize your infrastructure and applications



# ACCELERATING VALUE WITH HPE GREENLAKE

## TIME

**75%**

shorter time to deploy digital projects<sup>1</sup>

## RISK

**85%**

less unplanned downtime<sup>2</sup>

## COST

**30-40%**

CAPEX savings due to eliminated need for overprovisioning<sup>1</sup>

## CONTROL & INSIGHT

**40%**

increased IT team productivity by reducing the support load on IT<sup>1</sup>

<sup>1</sup> A commissioned study conducted by Forrester Consulting, The Total Economic Impact™ of HPE GreenLake, May 2020

<sup>2</sup> IDC White Paper, sponsored by HPE, The Business Value of HPE GreenLake Management Services, January 2020



# HOW HPE GREENLAKE LEADS

## UNIQUE

### True

pay-per-use<sup>1</sup> on-premises, based on actual metered usage<sup>1</sup>

### Active

capacity planning; drives cost savings and eliminates overprovisioning

Inherently  
**multi cloud** &  
**multi-stack**

## EXPERTISE

**~\$4B**

TCV booked to date

**~1000**

Customers, 50+ countries globally

### Unique IP

through acquisitions and organic investment

**700+**

partners ready and selling

**10+**

years of IT as-a-service on premises

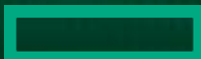
**>90%**

customer retention

← Breadth and depth of →

**offerings, partners, technologies**

<sup>1</sup> Reserve may apply



## NEXT STEPS

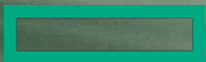
---

- **Assess and define** your right mix of clouds
- **See the demo** of HPE GreenLake
- **Discover your ROI** from HPE GreenLake with [Forrester Research ROI estimator tool](#)
- **Try and buy** cloud services through HPE GreenLake today

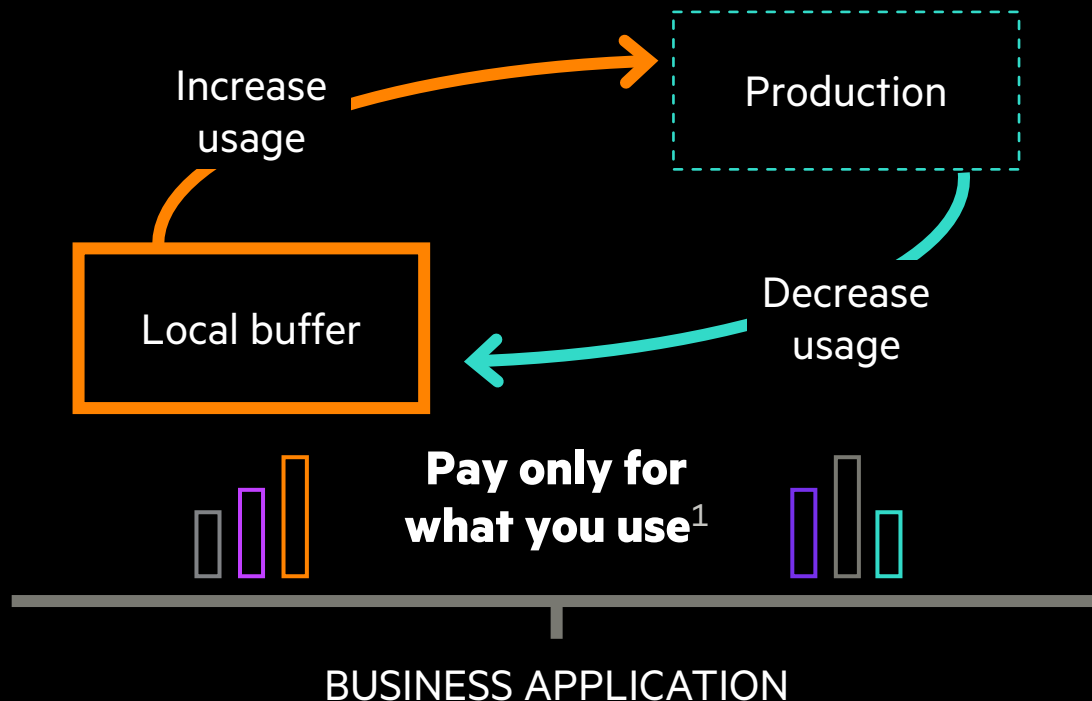
Visit [hpe.com/GreenLake](https://hpe.com/GreenLake) for more information

# THANK YOU

---



# CLOUD SERVICES ON-PREMISES



## Choose the services for your workloads

With workload-optimized infrastructure

## Free up your resources

Rely on expertise to support, meter, and manage your capacity needs, with additional services as needed to operate any or all of your IT stack

## Pay only for what you consume

Pay monthly for what you use based on advanced metering<sup>1</sup>

## Always have capacity ahead of demand

Scale with ease with an installed buffer as we actively monitor, manage, and deploy capacity ahead of demand

1 Reserve may apply